



# 2013-2014 ÖĞRETİM DÖNEMİ HEMŞİRELİK VE SAĞLIK II UYGULAMASI MODÜLÜ

## UYGULAMA DEĞERLENDİRME GRAFİKLERİ

## **UYGULAMA KOORDİNATÖRLERİ**

Doç.Dr. Aynur UYSAL TORAMAN

Doç. Dr. Ülkü GÜNEŞ

## **UYGULAMA SEKRETERLERİ**

Araş. Gör. Renginar ÖZTÜRK DÖNMEZ

Araş. Gör. Burcu CEYLAN

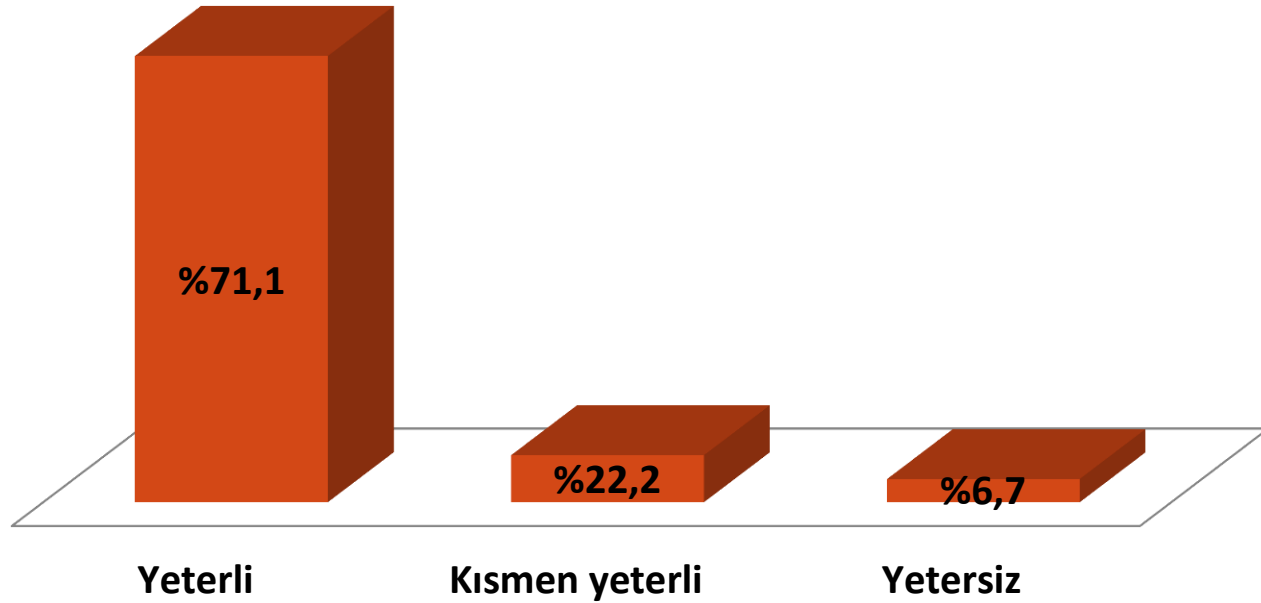
## **ÖLÇME DEĞERLENDİRME SORUMLUSU**

Doç. Dr. Şafak DAĞHAN

# A) UYGULAMA ALANI/KLİNİKLERE İLİŞKİN GÖRÜŞLER

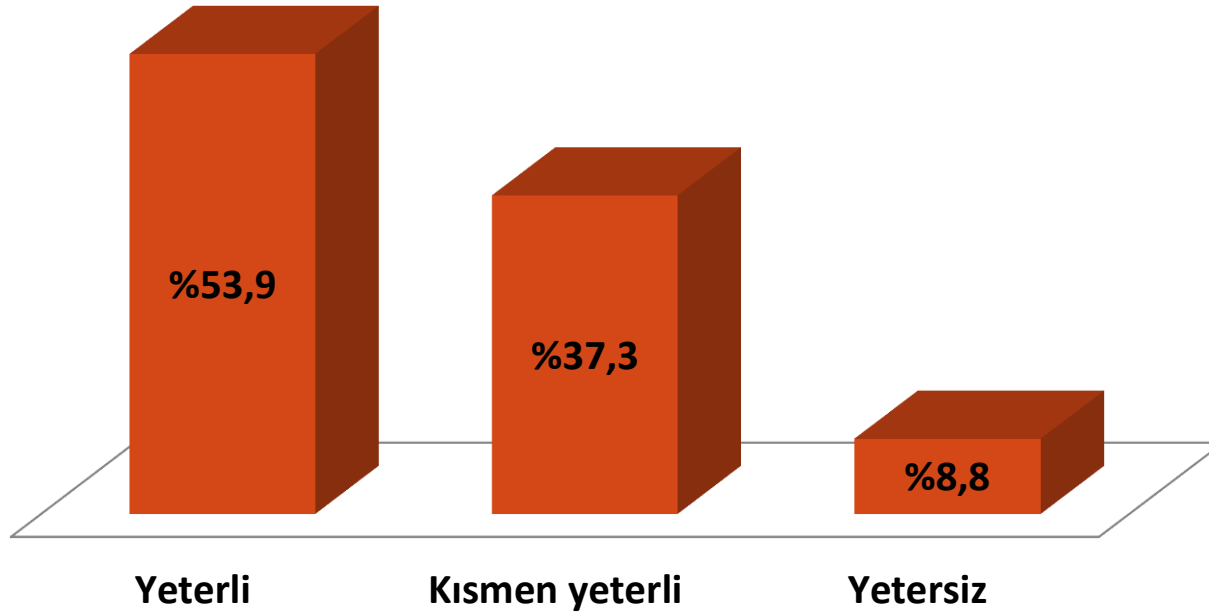
# 1) UYGULAMA SÜRESİ (n=397)

## GENEL UYGULAMA SÜRESİ



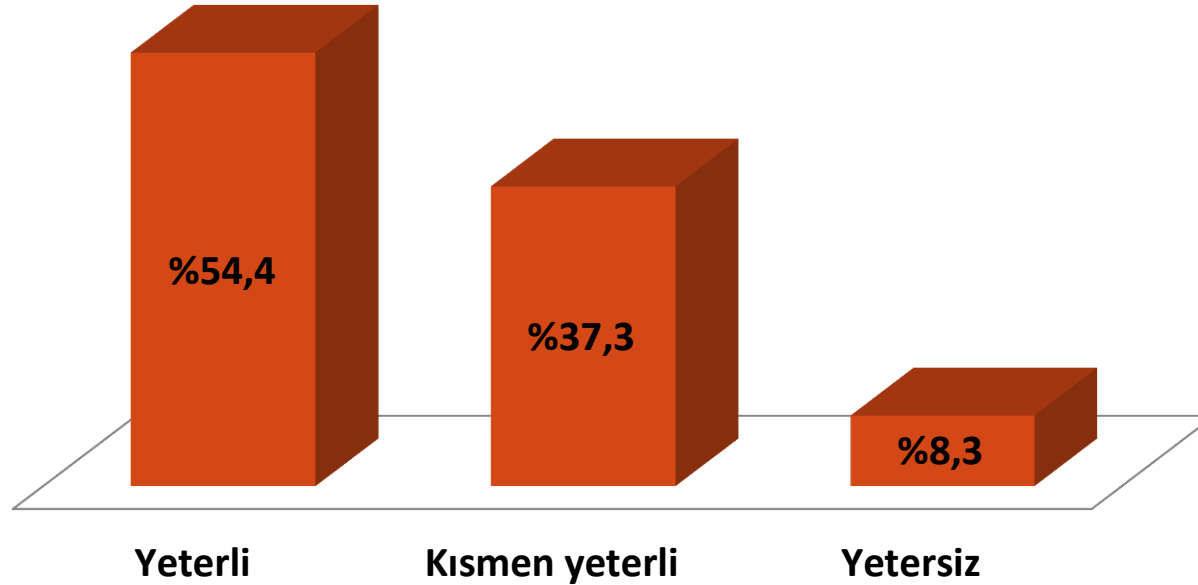
# 1) UYGULAMA SÜRESİ (n=217)

## KLİNİK -1'e AYRILAN SÜRE



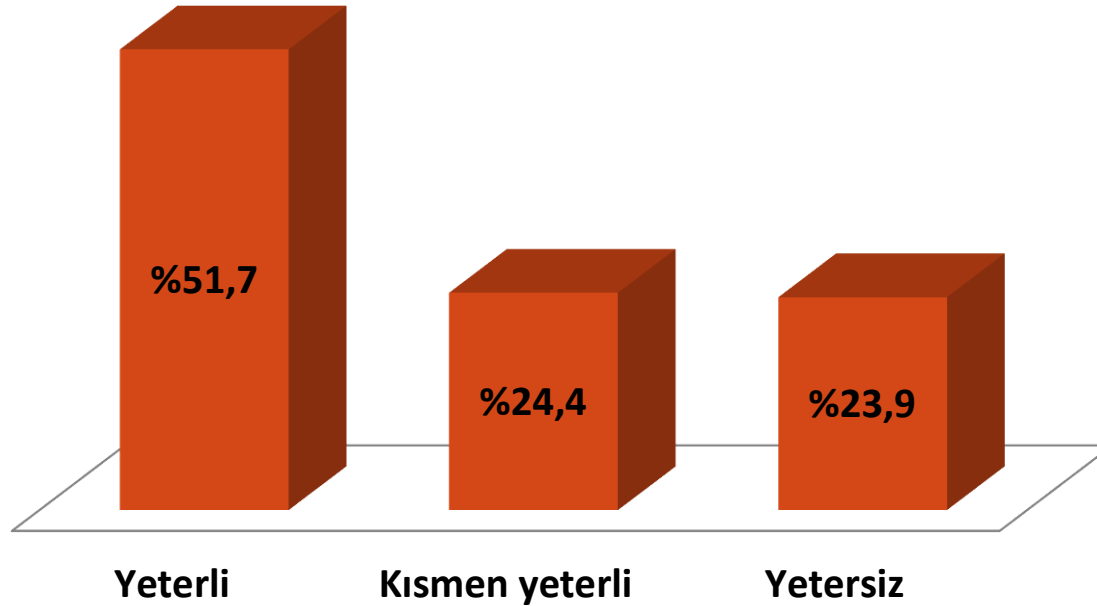
## 1) UYGULAMA SÜRESİ (n=217)

### KLİNİK-2 'ye AYRILAN SÜRE



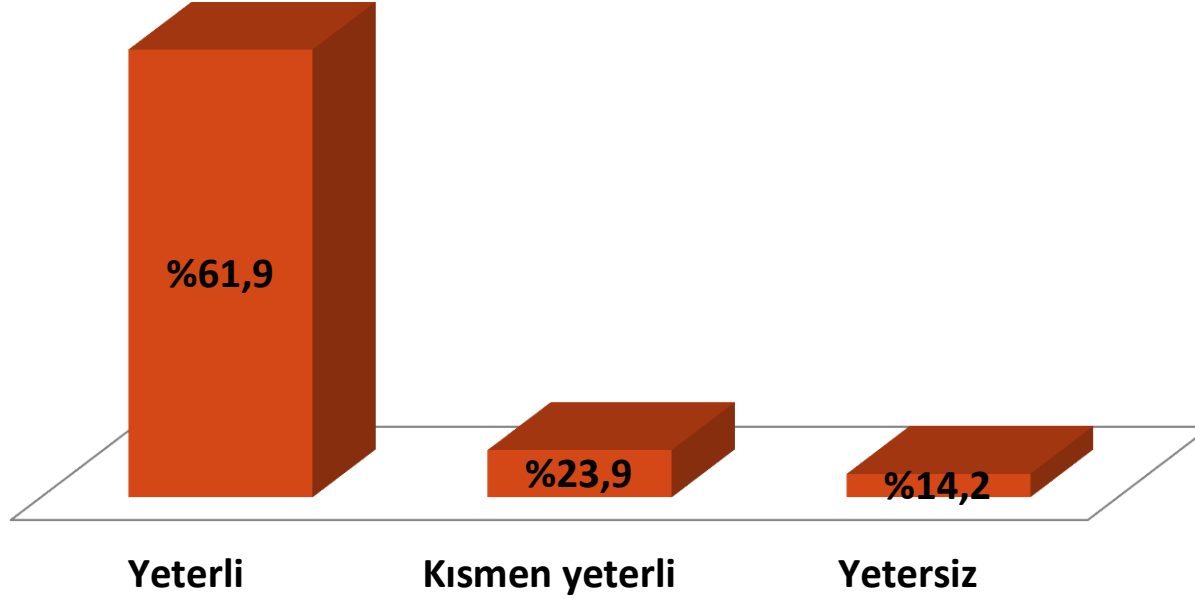
# 1) UYGULAMA SÜRESİ (n=176)

## ASM İÇİN AYRILAN SÜRE



## 1) UYGULAMA SÜRESİ (n=176)

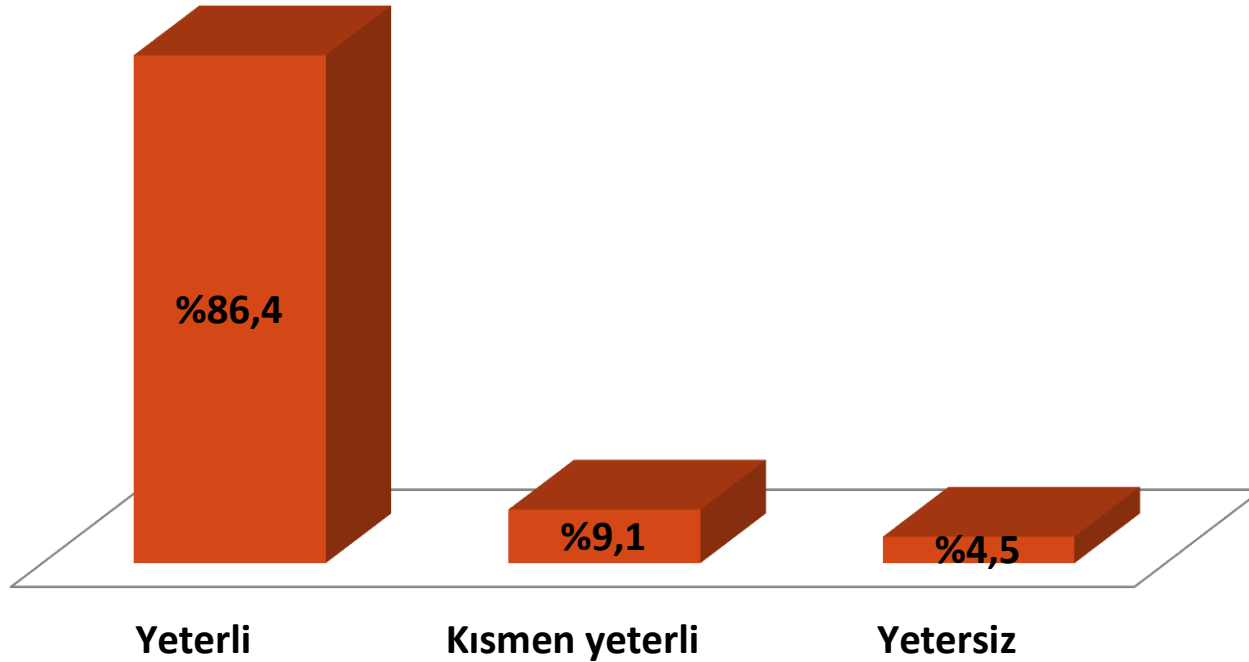
### AÇSAP İÇİN AYRILAN SÜRE





## 1) UYGULAMA SÜRESİ (n=176)

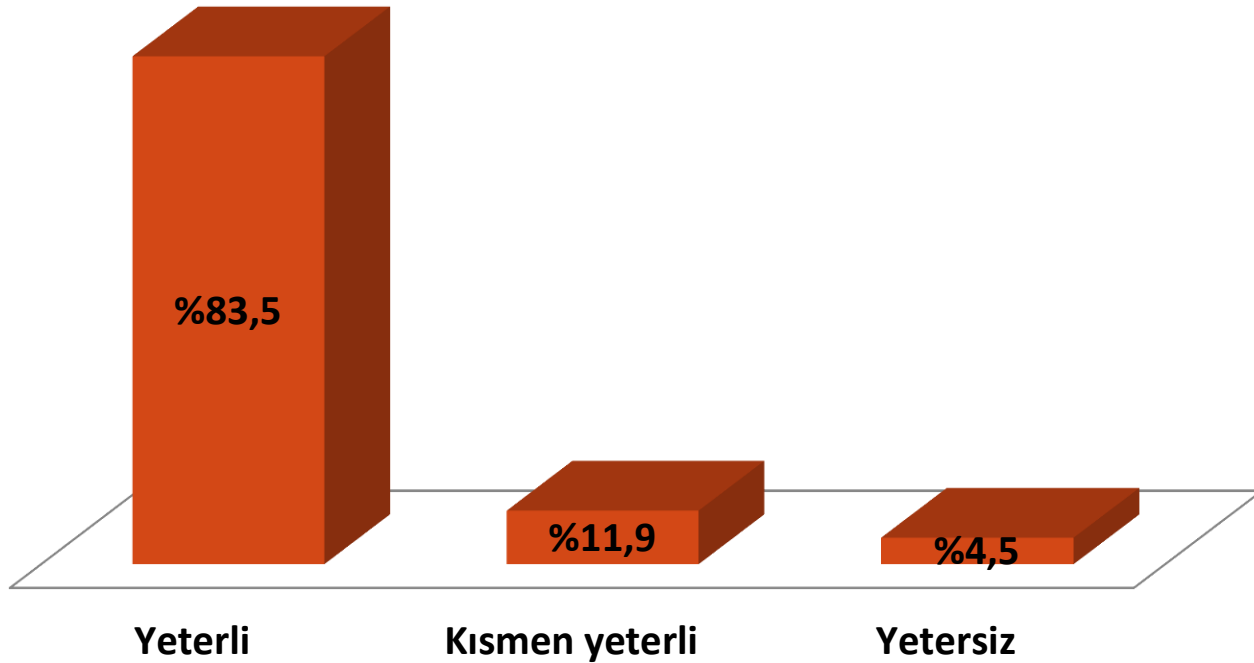
### HUZUREVİ İÇİN AYRILAN SÜRE



Grafik üzerindeki rakamlar yüzde değerleri belirtmektedir

## 1) UYGULAMA SÜRESİ (n=176)

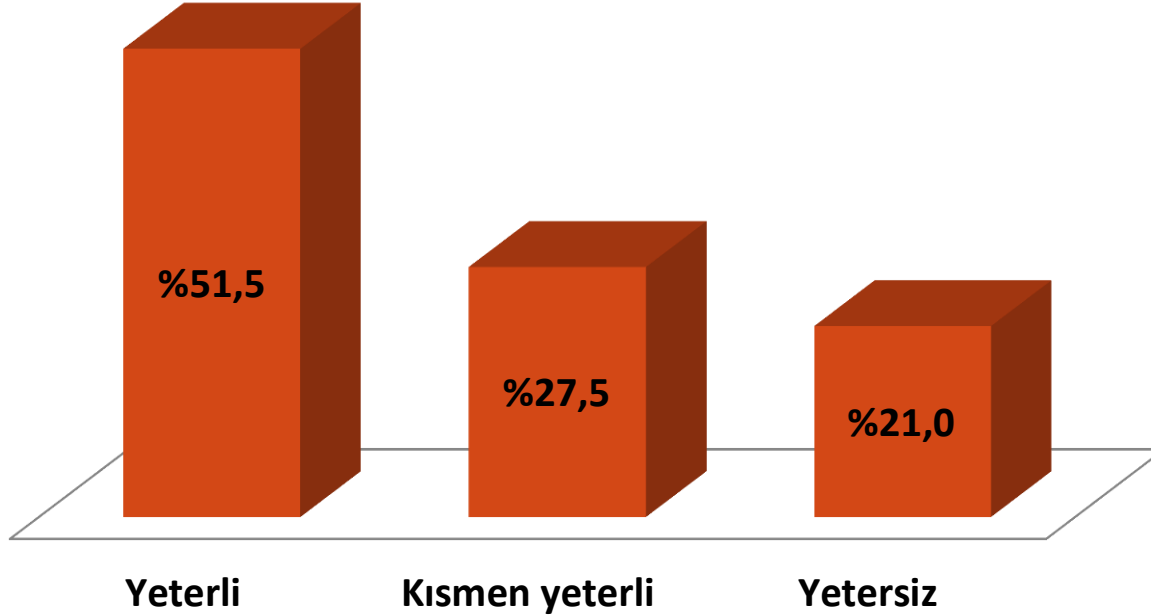
### İLKÖĞRETİM OKULU İÇİN AYRILAN SÜRE



Grafik üzerindeki rakamlar yüzde değerleri belirtmektedir

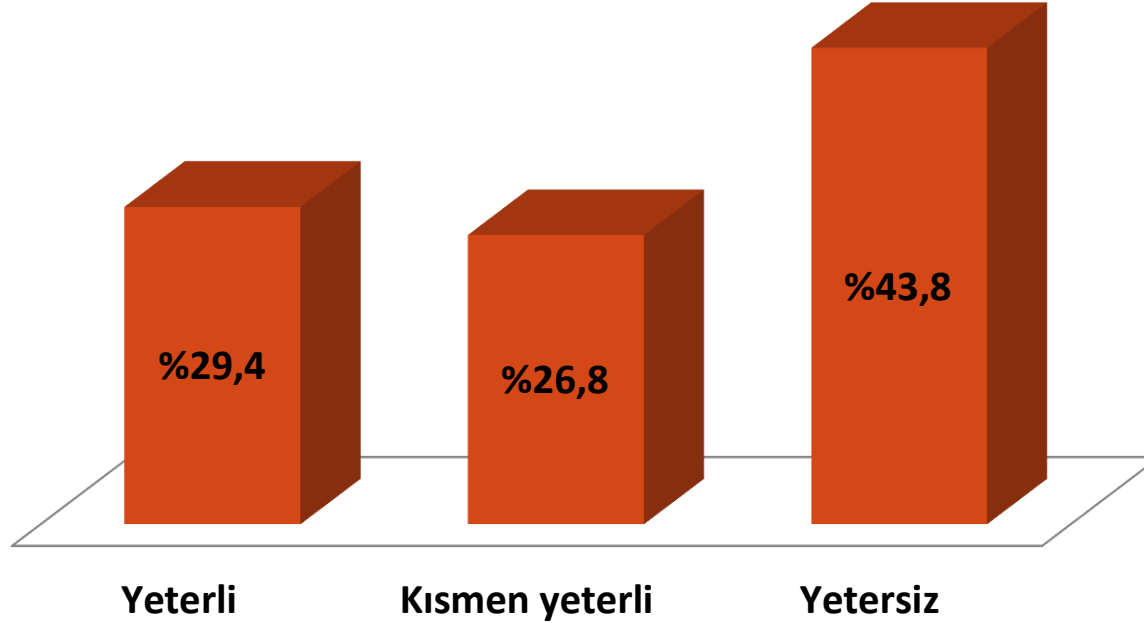
## 2) UYGULAMA ALANLARININ/KİLİNİKLERİNİN FİZİKSEL ÖZELLİKLERİ (N=396)

### ULAŞIM



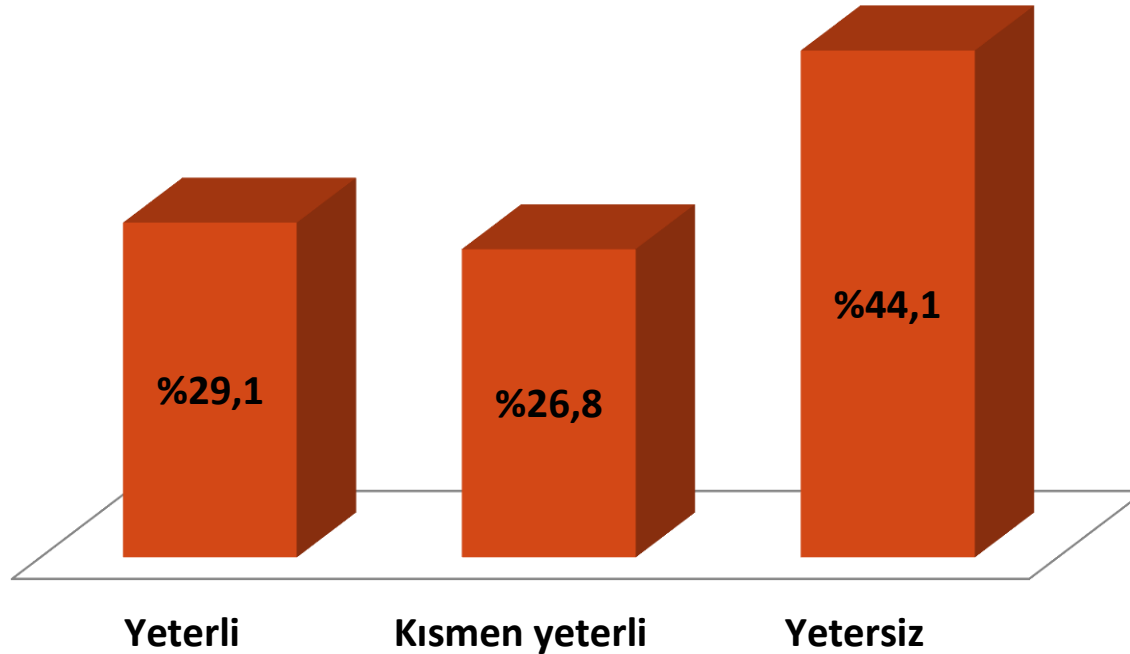
## 2) UYGULAMA ALANLARININ/KİLİNİKLERİNİN FİZİKSEL ÖZELLİKLERİ (N=396)

### GIYINIP-SOYUNMA



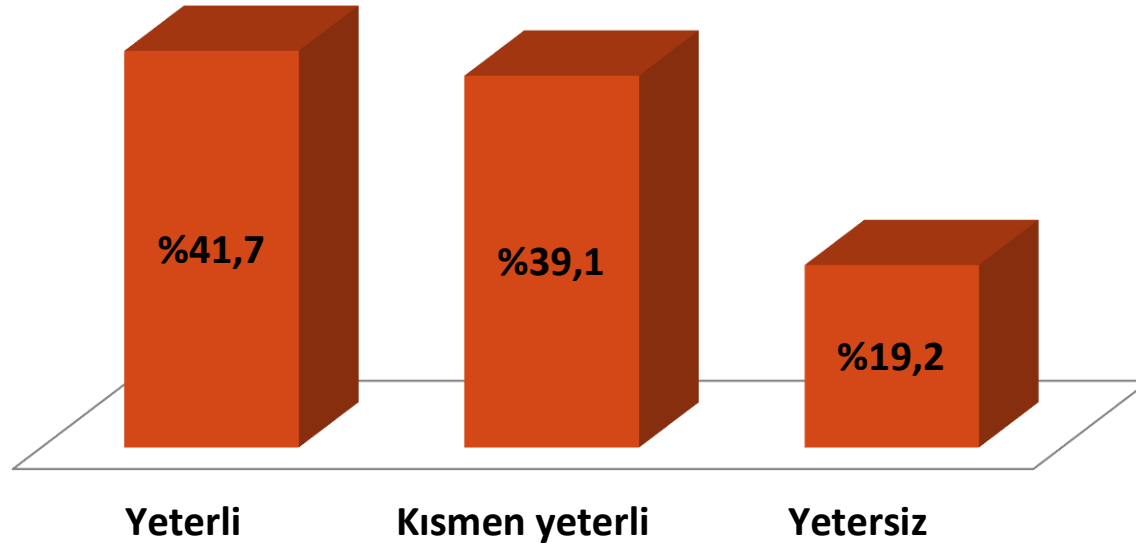
## 2) UYGULAMA ALANLARININ/KİLİNİKLERİNİN FİZİKSEL ÖZELLİKLERİ (N=396)

### BESLENME



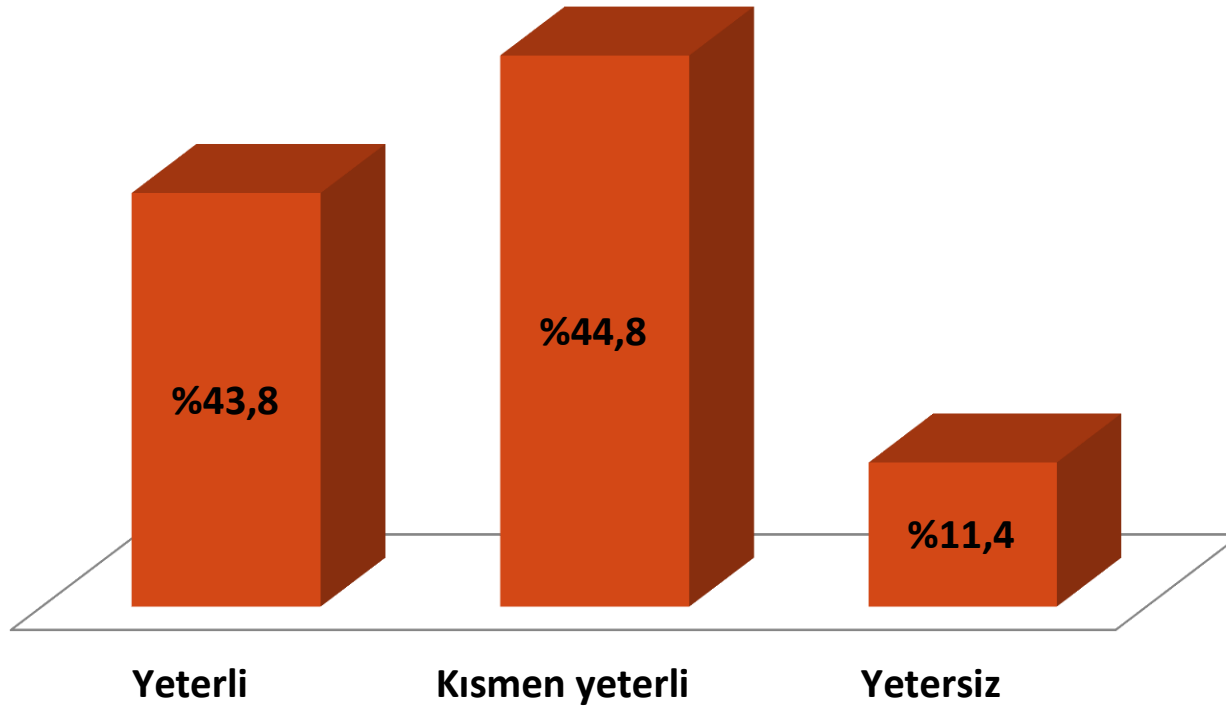
## 2) UYGULAMA ALANLARININ/KİLİNİKLERİNİN FİZİKSEL ÖZELLİKLERİ (N=396)

### GÜVENLİK



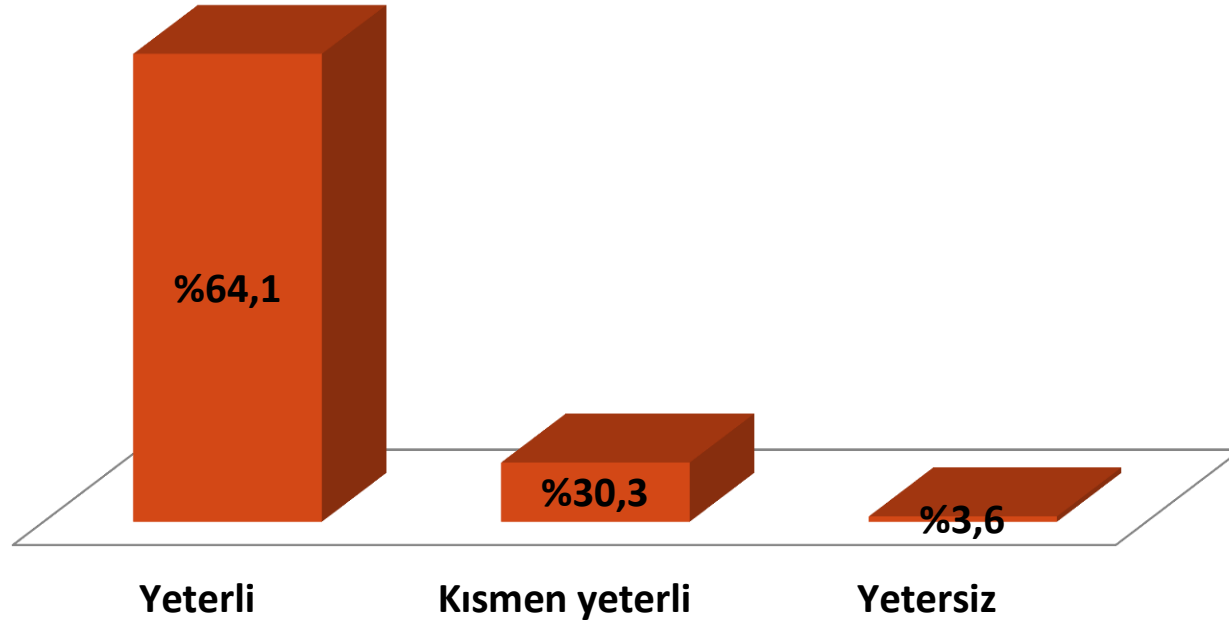
### 3) UYGULAMA ALANLARININ/KLİNİKLERİNİN MESLEKİ BECERİLERİ GELİŞTİRMEYE KATKISI (N=386)

#### TEORİK BİLGİLERİ KULLANMA VE GELİŞTİRME



### 3) UYGULAMA ALANLARININ/KLİNİKLERİNİN MESLEKİ BECERİLERİ GELİŞTİRMEYE KATKISI (N=386)

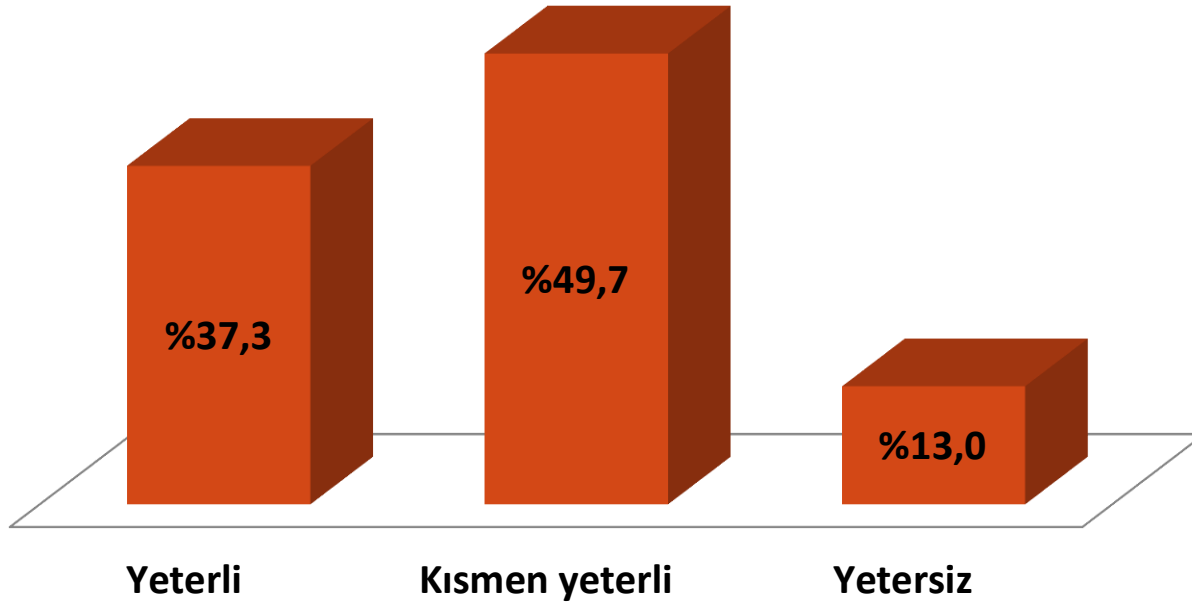
#### İLETİŞİM BECERİLERİNİ GELİŞTİRME



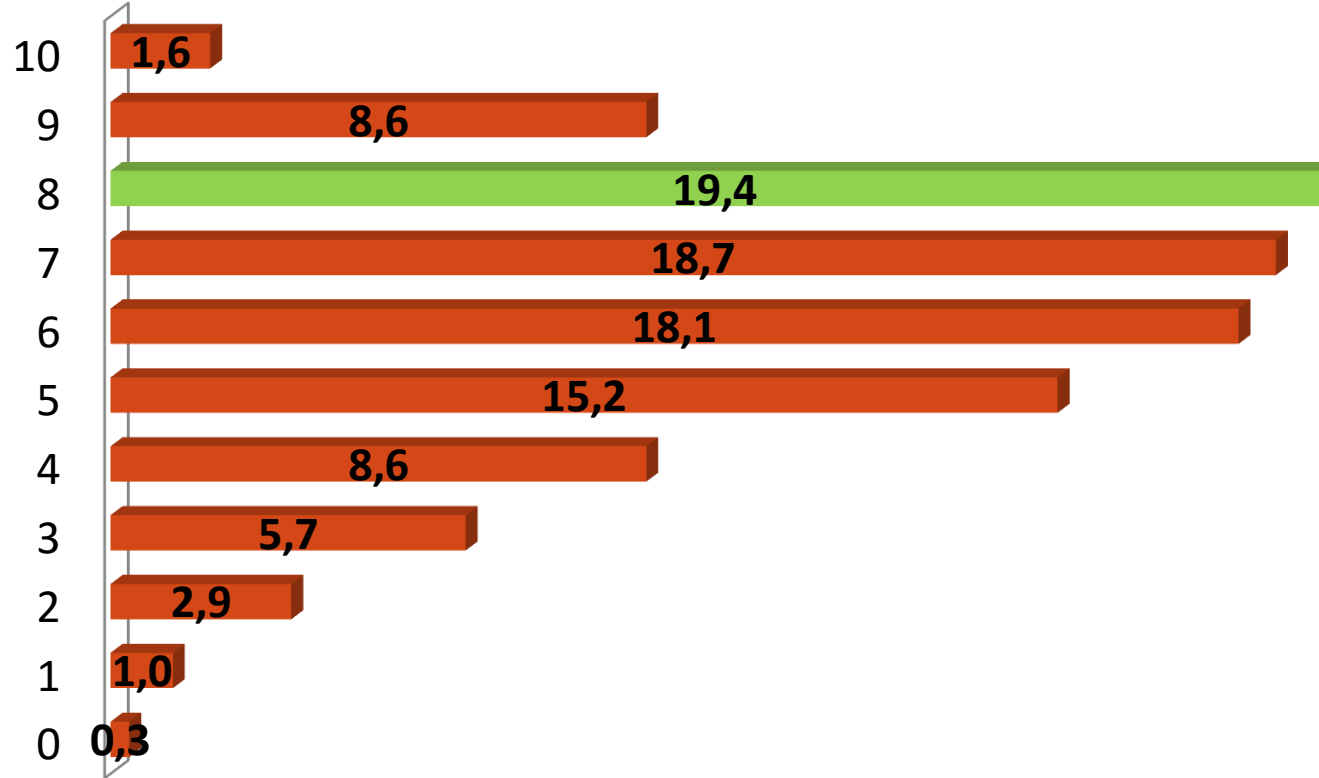


### 3) UYGULAMA ALANLARININ/KLİNİKLERİNİN MESLEKİ BECERİLERİ GELİŞTİRMEYE KATKISI (N=386)

#### PSİKOMOTOR BECERİLERİNİ GELİŞTİRME



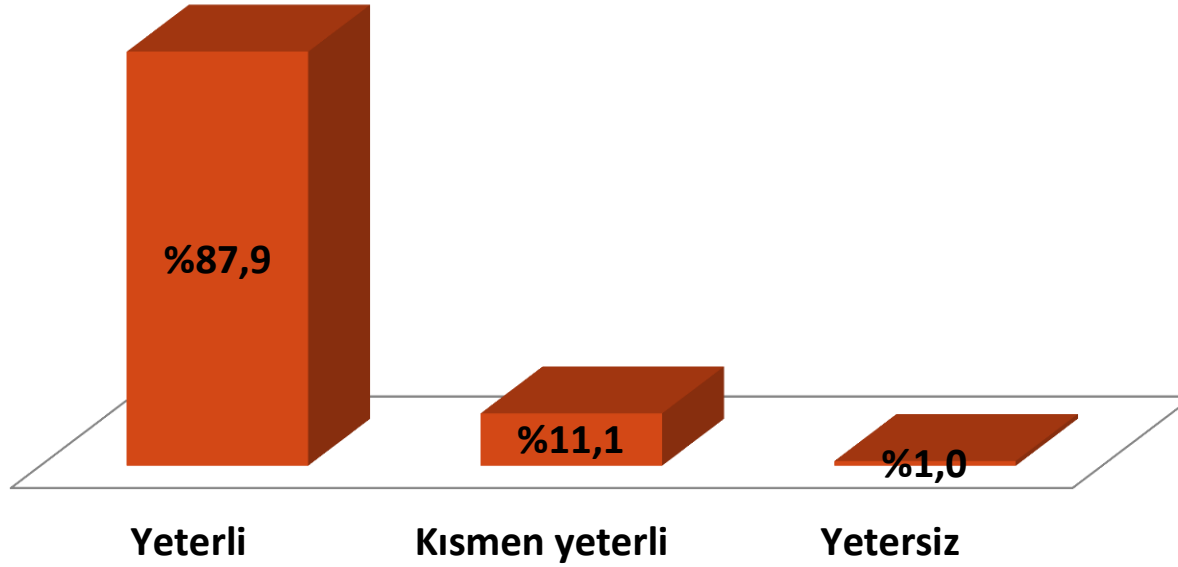
## Teorik/Kuramsal Bilgi ve Laboratuvar alıřmalarının Uygulama Alanı ile rtüşme Durumu (%) (N=315)



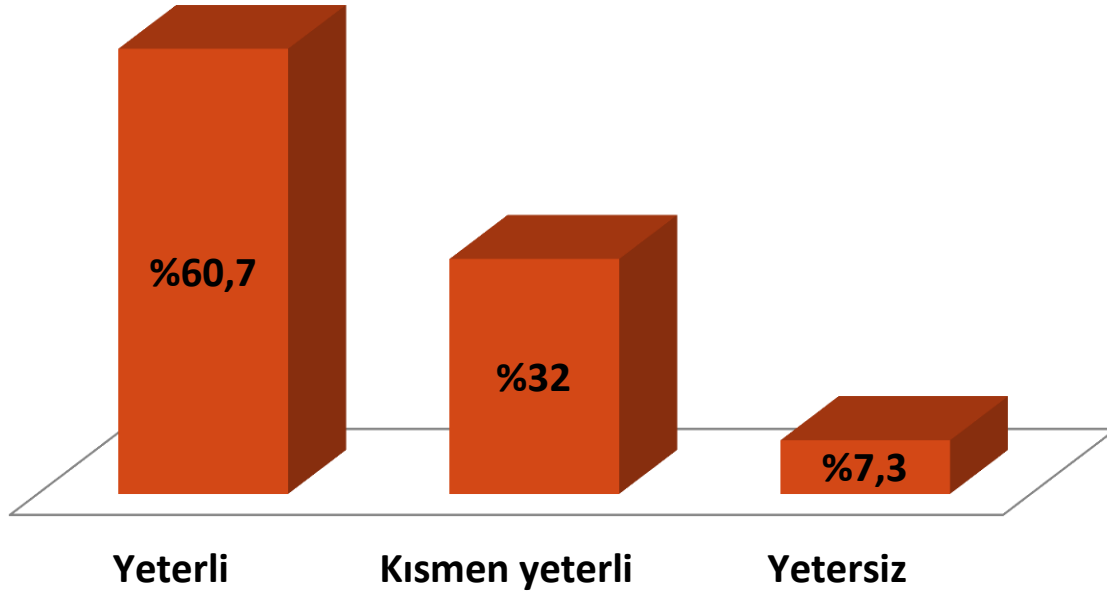
Ortalama puan: 6.21±1.94

# B) UYGULAMA ALANI/KLİNİKLERDE İLETİŞİME İLİŞKİN GÖRÜŞLER

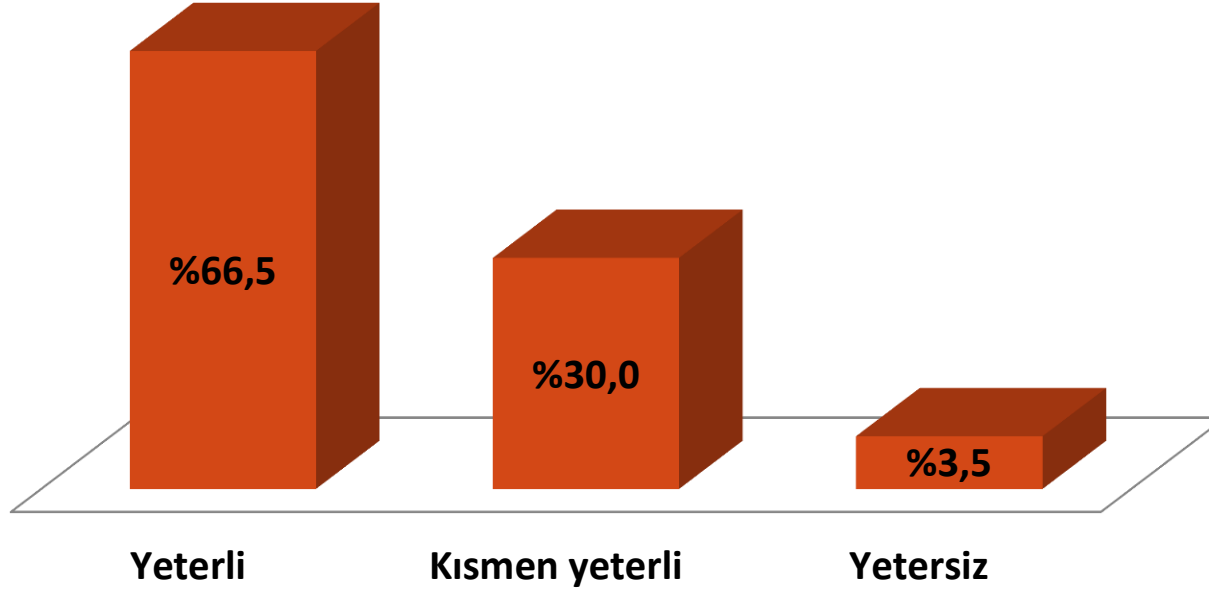
## ARKADAŞLARI İLE İLETİŞİM (N=397)



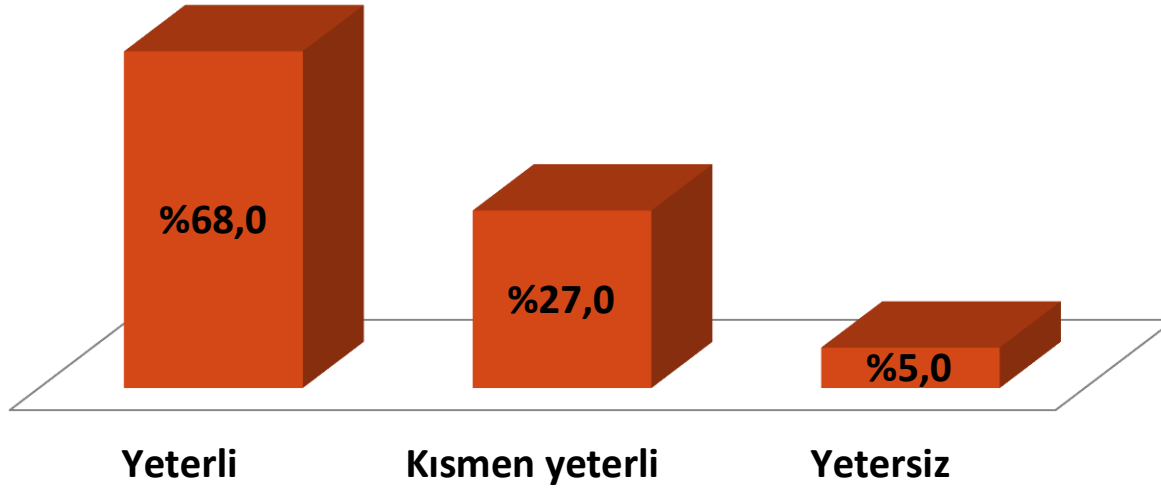
## ÖĞRETİM ELEMANLARI İLE İLETİŞİM (N=397)



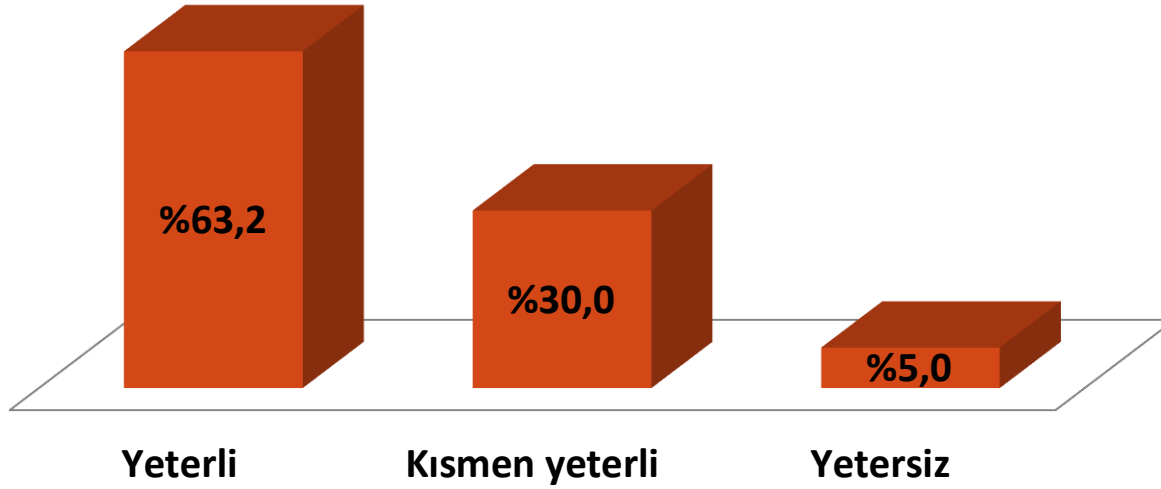
## EKİP ÜYELERİ İLE İLETİŞİM (N=397)



## BİREY/HASTA İLE İLETİŞİM (N=397)

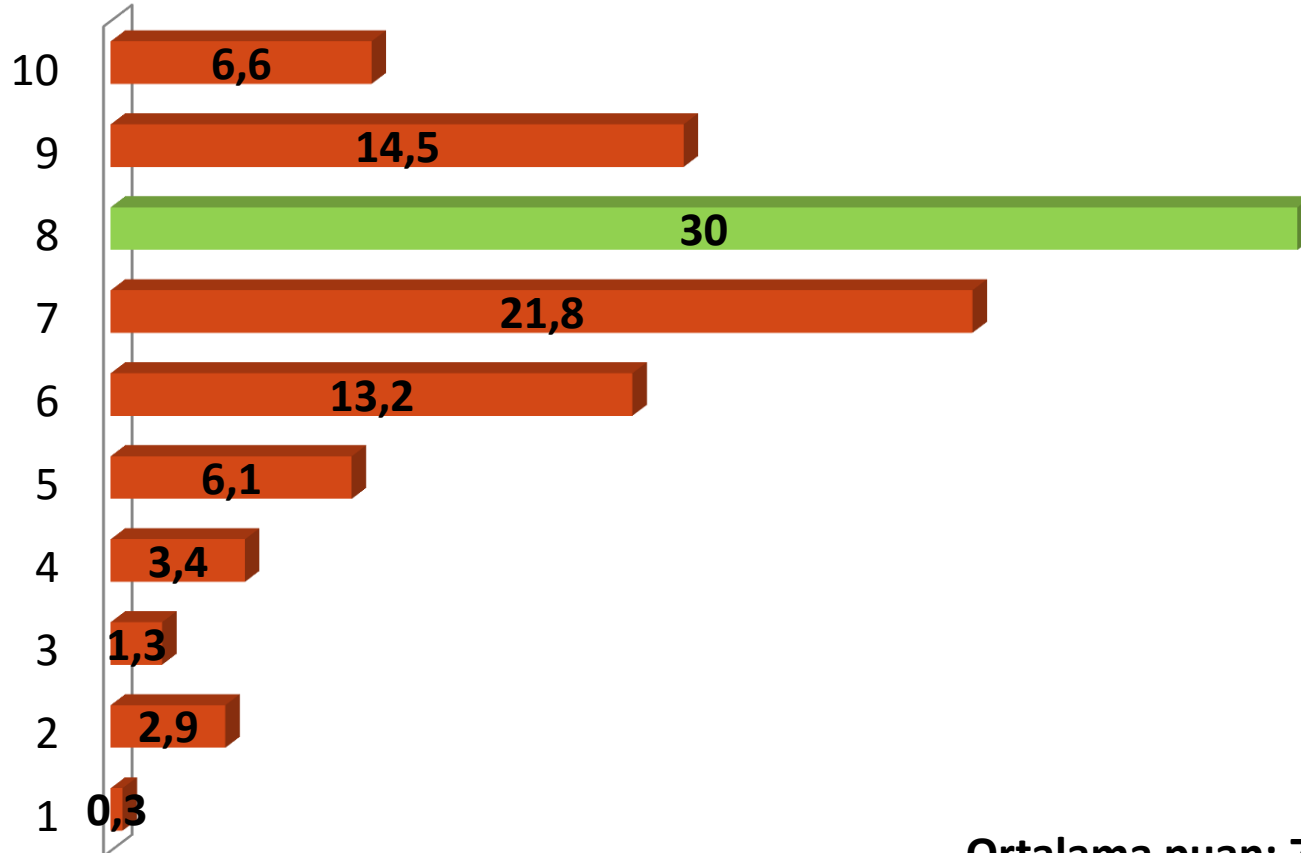


## BİREY/HASTA YAKINI İLE İLETİŞİM (N=397)



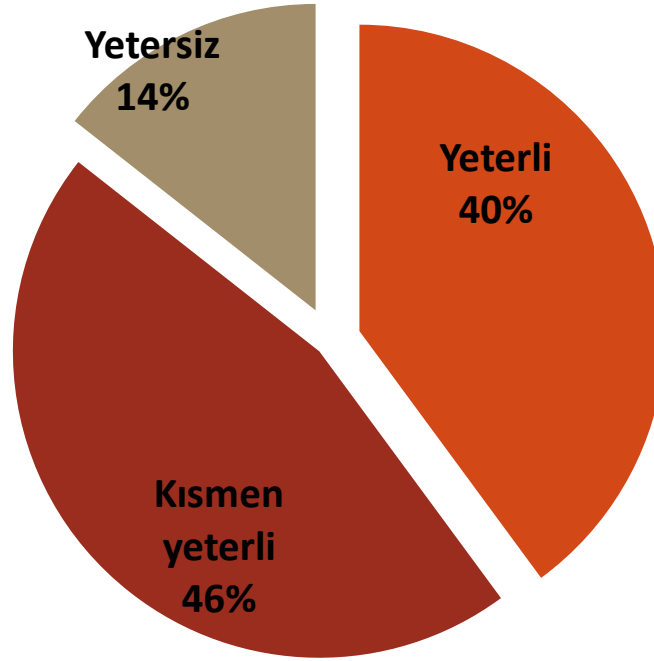


## UYGULAMANIN İLETİŞİM BECERİLERİNİN GELİŞİMİNE KATKISI (%) (N=397)

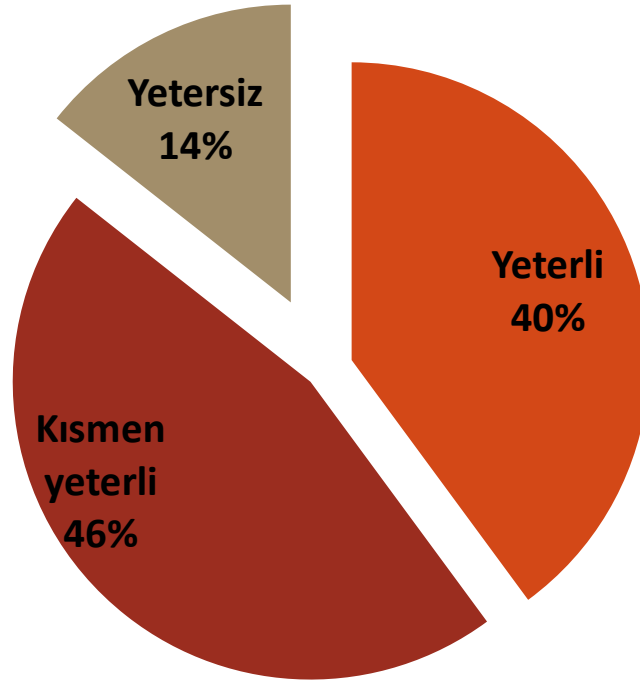


# C) UYGULAMA ALANI/KLİNİKLERDE KULLANILAN FORMLARA İLİŞKİN GÖRÜŞLER

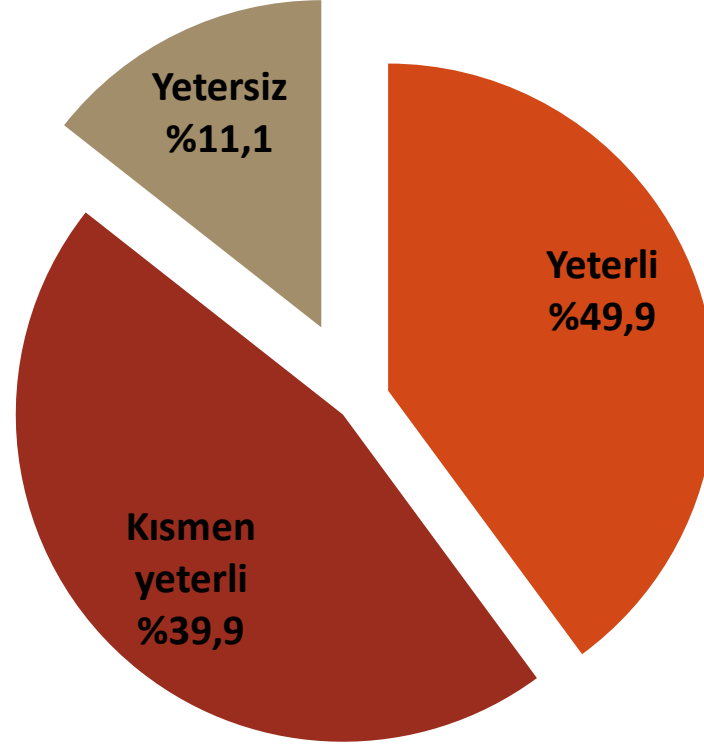
## FORMLARIN UYGULAMA ALANINA UYGUNLUĐU (N=396)



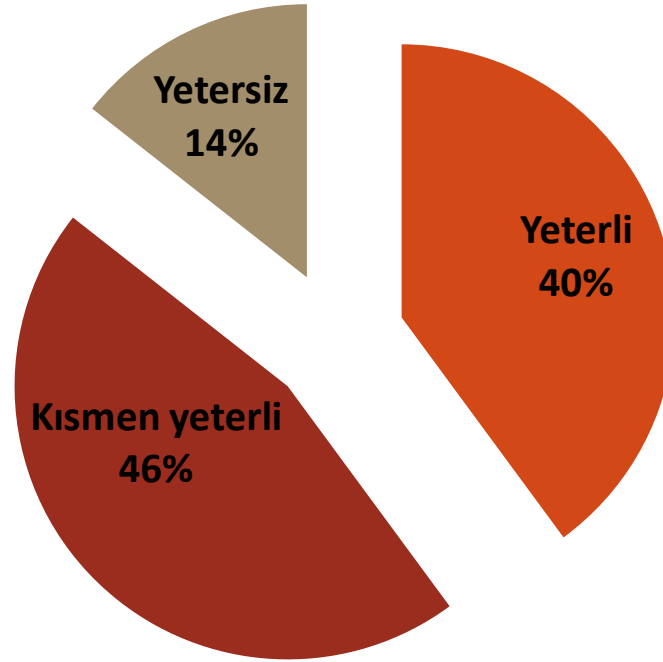
## FORMLARIN TEORİK/KURUMSAL DERS İÇERİĞİ İLE UYUMU (N=396)



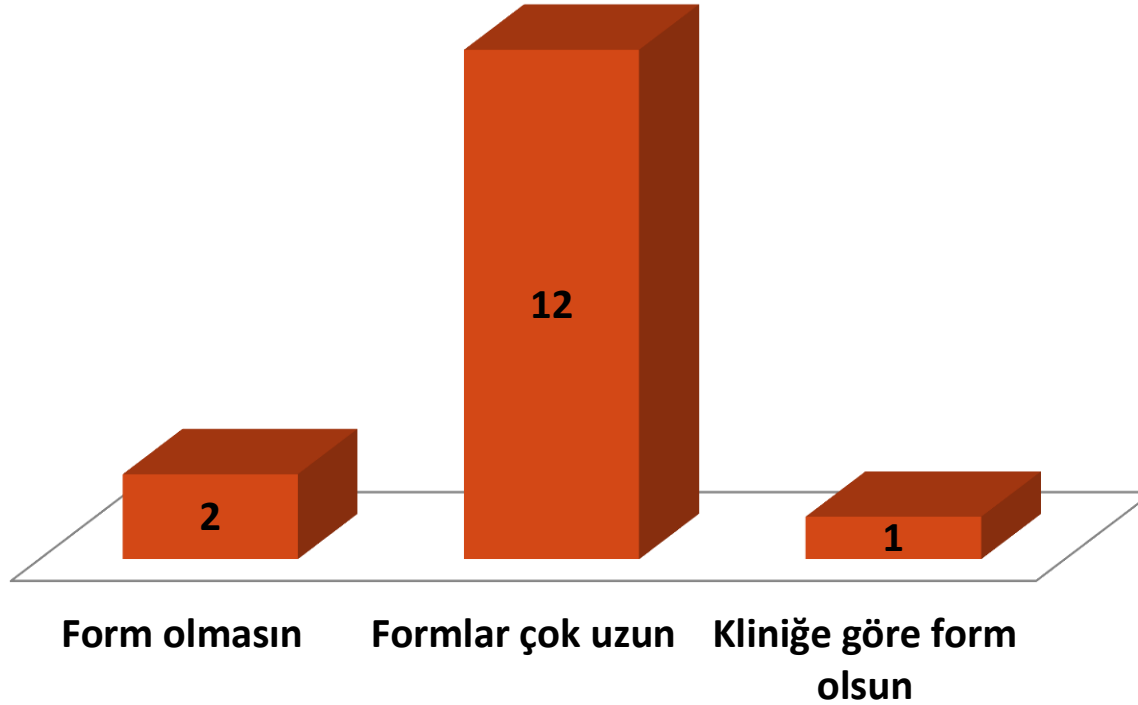
# FORMLARIN ANLAŞILIRLIĞI (N=396)



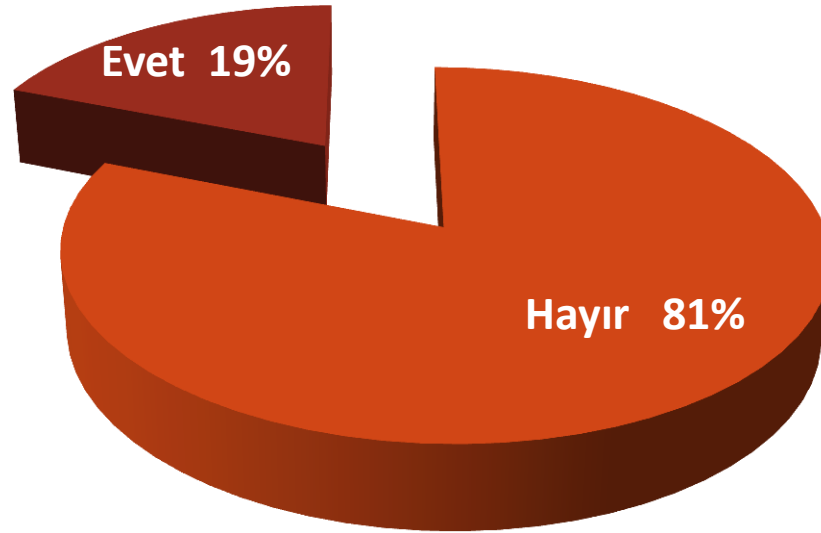
# FORMLARIN KULLANIŐLILIĐI (N=396)



# FORMLARA İLİŞKİN GÖRÜŞLER (N=15)

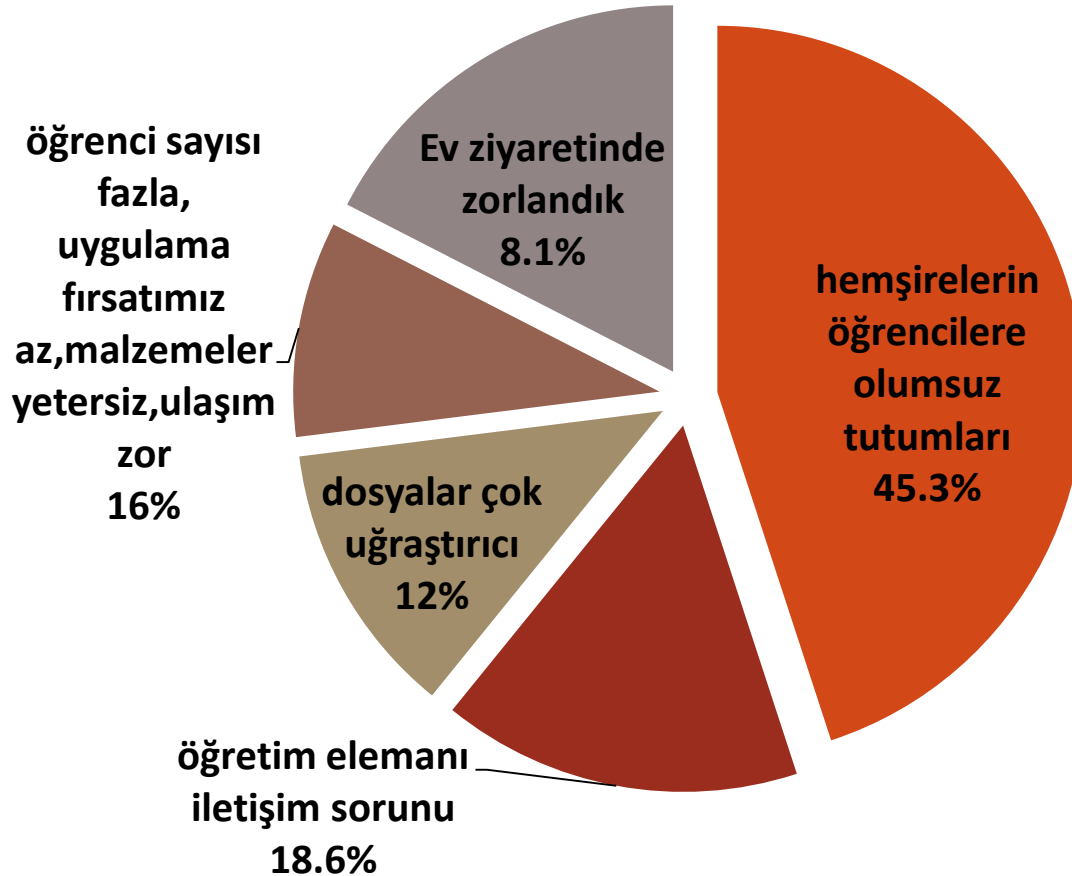


# UYGULAMA ALANINDA/KLİNİKTE SORUN YAŞAMA DURUMU (N=395)

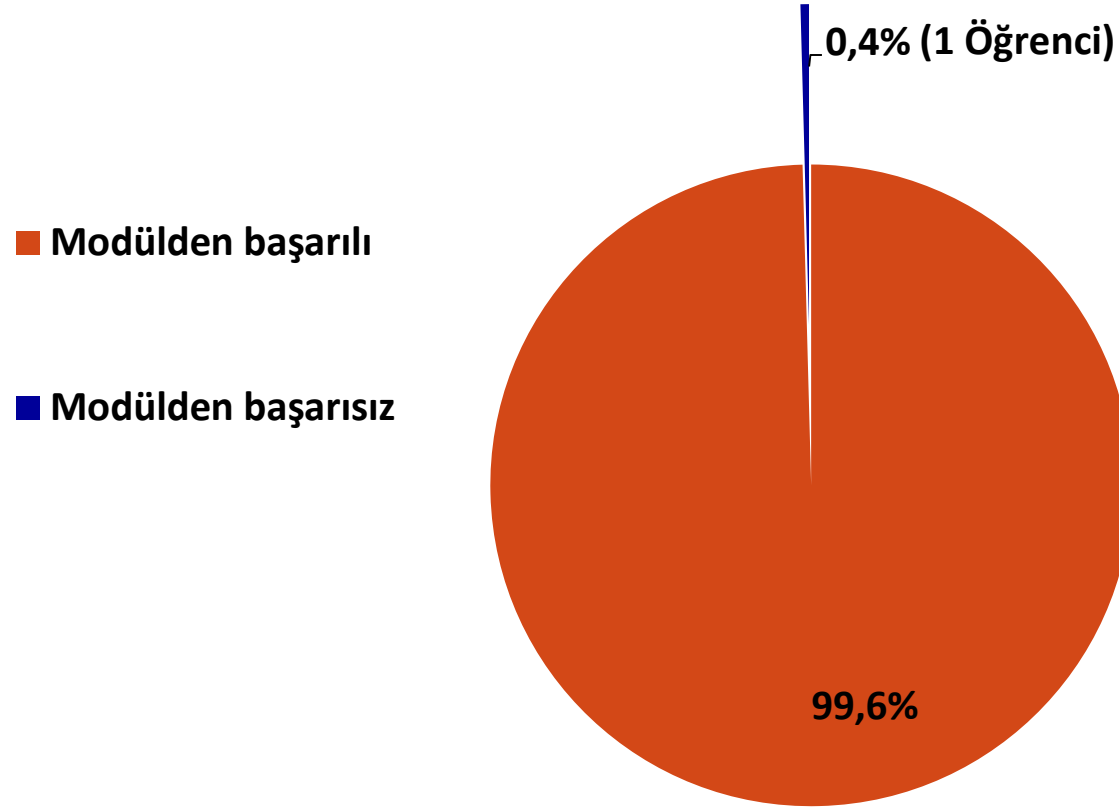




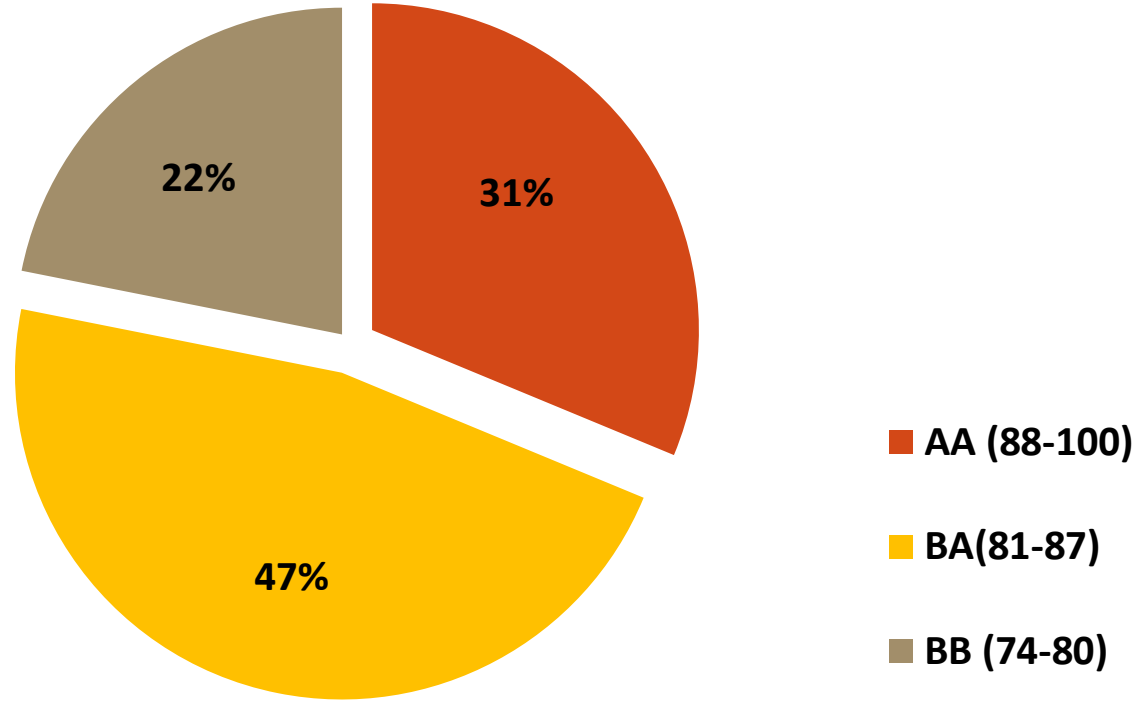
# UYGULAMA ALANLARINDA YAŞANILAN SORUNLAR (N=75)



# MODÜL BAŞARI DURUMU

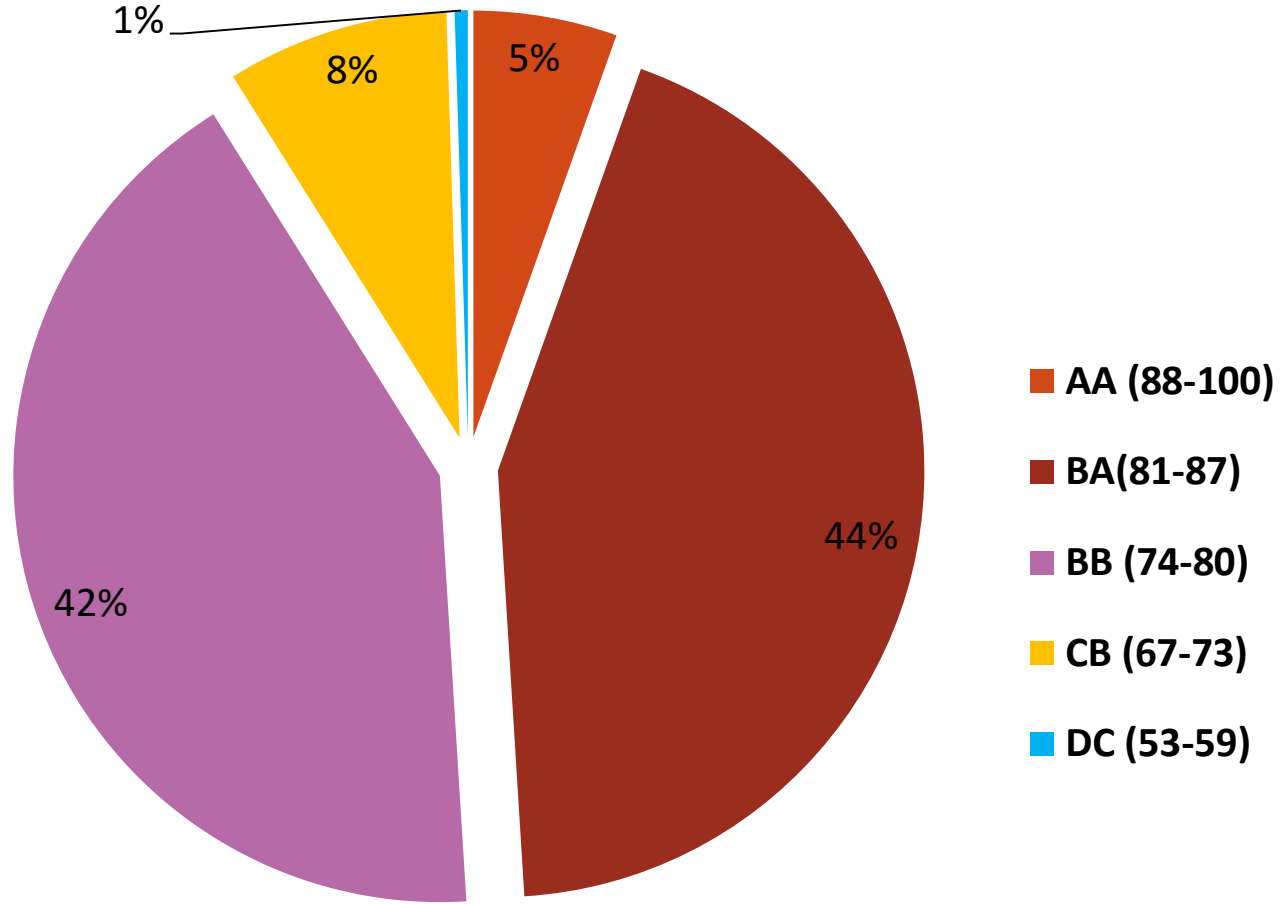


# FAKÜLTE -BAŞARI DURUMU DAĞILIMI (N=32)



**Genel Başarı Ortalaması =  $84.6 \pm 4.93$  (Min:75- Max:92)**

# YÜKSEKOKUL -BAŞARI DURUMU DAĞILIMI (N=202)



**Genel Başarı Ortalaması =  $80.11 \pm 4.97$  (Min:57- Max:92)**